

## Annual Report 2016/2017

Key Achievements

FISW Grows to Grade 8

Security Upgrades

IB Results Again Impress



Dear FIS Community and Friends,

Winter has arrived at FIS, which means our surrounding forests have turned to gold and students are arriving stuffed into warm jackets. It is also the time our auditors make their annual review of the school's financial records for the previous school year. The completion of this audit allows FIS to issue this Annual Report for the 2016/2017 school year. It is a look back at the previous school year and summarizes a number of key data points that we hope you will find of interest.

At the core of our school, and of each academic year, is our efforts to continue to our momentum toward enhancing student learning. The 2016/2017 year was not different as our Primary, Elementary and Wiesbaden divisions expanded their focus on the Readers-Writers Workshop that was implemented under the mentorship of Columbia University's workshop leaders. The Upper School furthered its use of the Global Online Learning Academy to offer online learning to students and prepared for an expansion of computational thinking courses within the IB Diploma Programme. And in all divisions, the school's leadership refined its tracking of Key Performance Indicators (KPI's) to not only track academic data, but also less tangible data points that assessed our progress in building character attributes among our students.

In the past academic year, the school continued its momentum from the opening of the Stroth Center with additional facility improvements. At the FIS Wiesbaden campus, a new security booth was installed. The Primary Campus also opened a new security entrance, along with a complete remodeling of its outdoor playground. Possibly the biggest transformation of last year was the creation of a second artificial turf sport field in Oberursel with state-of-the-art "grass" designed specifically to reduce sport injuries.

While the outside of our campuses continues to be transformed, students are transformed within the classrooms. The school played to packed audiences in productions such as *Beauty and the Beast* and *Life is a Cabaret*, the latter being a dramatic festival that included students from six other international schools. The numbers of students in band, choir, dance, and drama continues to grow at our school, meeting our goal to offer an education balanced by a rich performing arts program.

The recently implemented House System in the Upper School continued to link students across grade levels as they competed for points to be the leading FIS House. A new House initiative that began last year was the Spring Service Day in which all Upper School students were involved in local community service work. We believe character development has equal importance to intellectual development and are pleased that FIS opportunities continue to expand in this area.

In the past year, FIS upheld its reputation as an athletic powerhouse. In every season, at least one FIS team won a sport championship, adding to the already crowded trophy case. FIS also adopted its new Warrior sports logo, designed by an FIS alumnae! The number of parent volunteers that join together to operate the Athletic Booster Club bookstore and ABC Café, as well as the hundreds of visiting athletes that are housed with FIS families each year, make FIS known as not only as a strong competitor, but a gracious host as well.


FISW expanded to its full grade level capacity, adding its first Grade 8 class. The division achieved an enrollment well beyond its budgeted figure and established that it had indeed rebounded from the challenges experienced during

the recent economic crisis. During this challenging period, the campus had shrunk in size to roughly 150 students but, as of the previous school year, was near 220 students. FISW is now only one-year shy of marking the 25<sup>th</sup> anniversary of its opening!

In addition to the very visible events and transformations that take place each year, there were a number of important events that quietly took place behind the scenes at FIS. The new FIS Foundation had its first full year of operation, managing the generous endowment bequeathed to the school by the Stroth family. New classes were also added to the curriculum, with new IB Environmental Science and Sports Science bolstering STEM options within the FIS IB Diploma Programme.

And last but not least, THEY DID IT AGAIN. Our FIS seniors achieved another year of exceptional IB Diploma results and college placements. Over the past three years, the FIS IB average scores have been 36-36-35, which gives it the highest three-year average of any international school in Europe!

Be assured that the 2017/2018 year will not see the school slow its progress, but it is currently developing exciting plans to accelerate learning for students in all divisions! Stay tuned to upcoming communications from the school as our ambitious plans for the future unfold. We now invite you to review additional statistical data from 2016/2017 that will offer you a brief snapshot of our school community.



Jonathan Clenshaw



Paul Fochtman

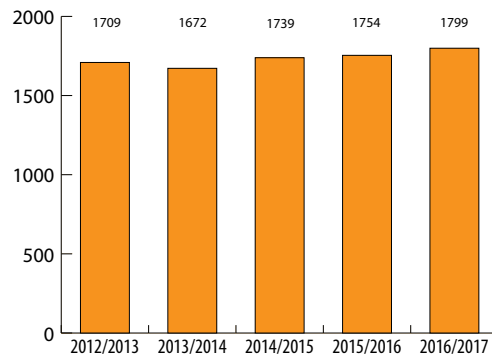


## Student Profile

### Student Enrollment

#### at FIS as of 1 September 2016

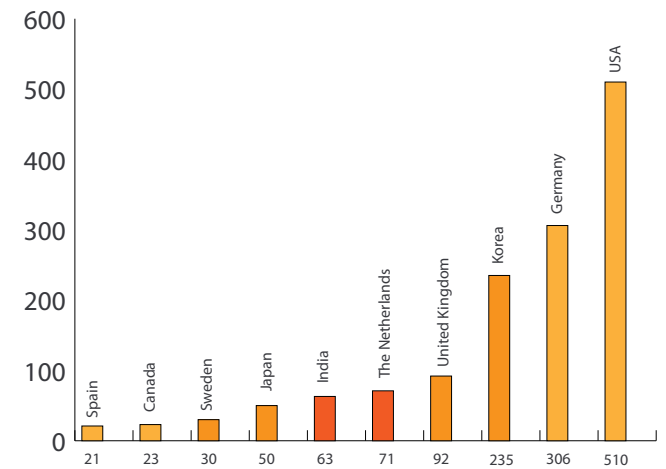
As the school of choice in the Frankfurt area, FIS has been able to weather market fluctuations. Enrollment has remained relatively stable with a slight growth trend over the last two years.



## Student Count:

### Nationalities at FIS as of 1 September 2016

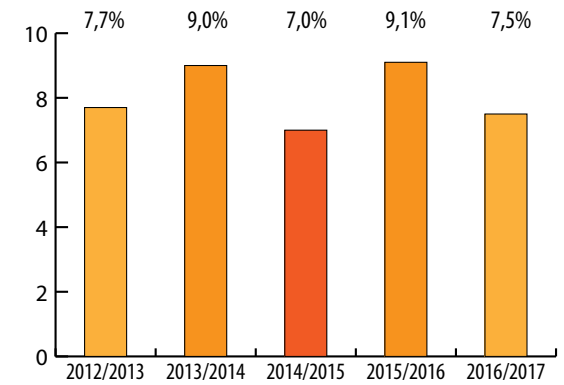
The population of the school remains highly diverse with more than 55 nationalities represented. This is a 10% increase in country representation over the previous year.





## Faculty Turnover

As in recent years, faculty turnover remained below 10%. The major reason for departures last year was teacher retirement, most after serving FIS for multiple decades.



## Participation in the IB Programme

Graduating Year	2017	2016	2015	2014	2013
Students Taking IB Courses	118 (100%)	118 (100%)	130 (100%)	126 (100%)	119 (100%)
Students Taking IB Diploma	108 (92%)	106 (90%)	113 (87%)	99 (79%)	105 (88%)

## IB Diploma Results for the Classes of 2013-2017

Graduating Year	2017	2016	2015	2014	2013
Total IB Diploma Candidates	108	106	113	99	105
Number Passed	103 (95%)	104 (98%)	111 (98%)	94 (96%)	101 (96%)
Average Score of Those Who Passed	35	36	36	35	33

## Placement of the Class of 2017

Universities & Colleges	Number of Students
USA/Canada	30
United Kingdom	30
Europe - Other	13
Germany	11
Korea	7
Japan	3
Asia - Other	2
<b>Total</b>	96 (81%)
Gap/Service Year	22 (19%)

Traditionally, one third of FIS graduates attend universities in the UK, one third in the USA/Canada and the remaining third elsewhere in the world. The Class of 2017 had a substantial interest in choosing a GAP/Service Year after graduation.





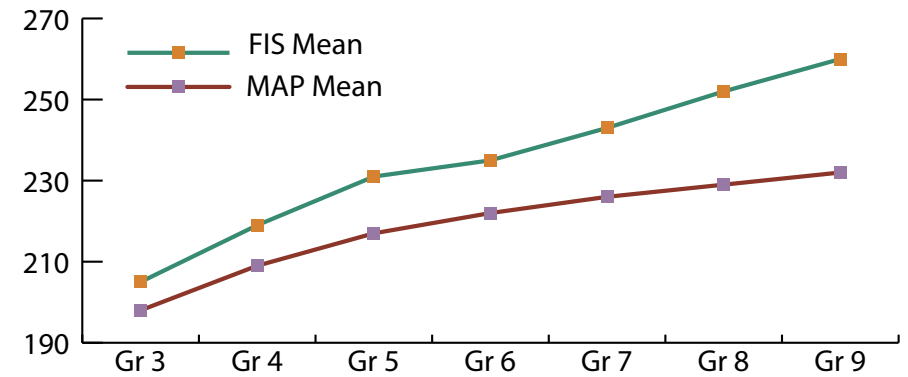
## Measures of Academic Progress (MAP) Norms

FIS uses Measures of Academic Progress (MAP) as its standardized testing instrument. This tool compares FIS students against a sample group of roughly three million other students. As can be seen from the data below, FIS students exceed the MAP norm in all testing areas. The

spring MAP data is used to demonstrate academic growth of individual students each year. FIS uses Grade 9 MAP data in mathamatics to help inform its placement of students in one of three levels of math classes.

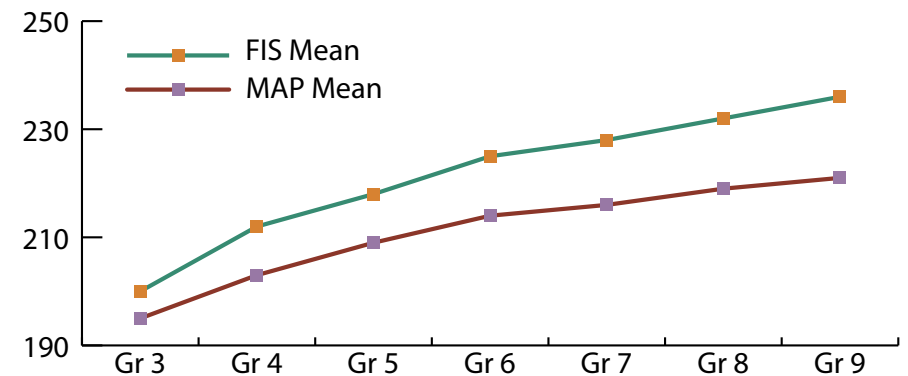
### Mathematics

Grade	FIS Mean	MAP Mean
3	205	198
4	219	209
5	231	217
6	235	222
7	243	226
8	252	229
9	260	232



### Reading

Grade	FIS Mean	MAP Mean
3	200	195
4	212	203
5	218	209
6	225	214
7	228	216
8	232	219
9	236	221





## FIS Annual Fund

The 2016/2017 FIS Annual Fund raised € 193,046 in donations from the generous support of FIS parents, faculty and staff, alumni, corporations, and friends. This amount represents an increase of 4.5% (or € 8,284) over the previous year's (2015/2016) Annual Fund which raised € 184,762. The increase reflects continued fundraising efforts to finance new and innovative learning programs outside the operating budget. The school has the goal of creating and strengthening a culture of giving within its diverse community.

For the year ending 30 June 2017, the Annual Fund received 125 donations (124 in 2015/2016) totaling € 193,046. This amount reflects a combination of donations to the Frankfurt International School e.V. and the Frankfurt International School Foundation, Inc., of € 176,863 and US \$18,465, respectively. The US dollar donations were converted to € 16,183 using the exchange rate of .8764 €/€/\$ as of 30 June 2017. There were 105 donations in Euros to the Annual Fund ranging from € 5 to € 85,000 and 20 donations in US Dollars ranging from \$20 to \$10,000. Excluding very large gifts, the average gift size was € 174 (€ 199).

Of the total 125 donations, 43% of the donations came from the FIS parent community, followed by 30% from FIS faculty and staff, 21% from alumni of the school, and 6% from corporations or small businesses. Furthermore, 66% (65% in 2015/2016) of the donations were repeat gifts, thanks to the loyal and generous support and commitment of our previous Annual Fund donors.

Approximately 68% (86% in 2015/2016) of the total value of donations to the 2016/2017 Annual Fund, or € 132,162 (€ 158,285 in 2015/2016) was in the form of restricted gifts. Donations designated for specific purposes were for example, Design Technology Lab, Student Scholarships, and the Learning and Sports Center.

The breakdown between unrestricted and restricted gifts to the 2016/2017 Annual Fund is as follows:

Unrestricted Gifts:	€ 60,884
Restricted Gifts:	
Design Technology Lab	€ 85,000
Student Scholarships	€ 24,026
Learning and Sports Center	€ 12,544
Other	€ 6,495
Kalahari	€ 2,629
George Henning-Ross	
English Writing Award	€ 1,467
Total Restricted	€ 132,162
<b>Total Annual Fund Donations</b>	<b>€ 193,046</b>

As in previous years, the Board of Trustees decided to distribute the unrestricted Annual Fund gifts evenly between Student Scholarships (TRP) and new investments in Innovative Learning and Teaching:

Distribution of Unrestricted Gifts	
50% to Scholarships - Tuition Reduction Program	€ 30,442
50% to Innovative Learning & Teaching Initiatives	€ 30,442
Total Unrestricted	€ 60,884

The success of the 2016/2017 Annual Fund is a tribute to the dedication and generosity of members of the international community of FIS parents, faculty and staff, alumni, corporations, and friends of FIS, whose commitment to excellence in education and belief in our mission inspired support of our efforts to continuously improve and enhance learning opportunities at FIS.

Frankfurt International School wishes to express its gratitude to all of its donors for helping to open new doors of opportunity.  
Believe. Inspire. Lead.

Thank you.



## Annual Fund Donors 2016/2017

Anonymous (multiple)  
Gayle Angbrandt and Dennis Schultze  
Linda Arnold  
Sharon Arnold  
Alec and Charlene Aspinwall  
Dr. Suna Atayurt and Andreas Naumann  
Dr. Katja & Ralf Baukloh  
Beier Family  
Nadia Bellardi  
Philip Benson and Julie Borsodi  
Bergquist Family  
Peter and Adrienne Blaquièrè  
Buchhandlung Bollinger  
David Bollom and Maria Ambrose  
Martha Boston-Majetic and Dragan Majetic  
Drs. Ralph and Sabine Brandes  
Calistru Family  
Maria De Campos Monteiro and Andreas Bühlmeier  
Nicole Hetzel Cassidy  
Chris Cataldo  
Karen Claire-Zimmet and Helge Zimmet  
Silke and Jonathan Clenshaw  
Richard Coburn  
Cowan Family  
Dawn Darling and Robert Ditchey  
Dr. Frances Dielmann  
Tobi Doeringer  
Doveton Family  
Drs. Stephan and Ute Falk  
Clive and Cynthia Fenner  
Dr. Paul and Wendy Fochtman  
Torsten Freymark and Jennifer Dressman  
Marvin Fritz  
Dr. Christian Glossner  
Wolfgang and Sangeeta Goering  
Frank Goetze  
Cris Goldberg  
William H. Goldberg  
Ward and Marlene Greenberg  
Joseph and Nicole Grillo

Heidi Hunter and Ole Hauch  
The Hawthorne Family  
Drs. Peter Hess and Delia Daniello  
Lotta and Marc Hornnaess Merlino  
Nancy Huston and Matthias Hünlein  
Dr. Norbert and Karin Jahr  
Ina Johanson Nysten and Eric Nysten  
Caroline Joslin-Callahan  
Jeffrey Kalas  
Karr Family  
Todd and Cornelia Kearns  
Dr. André and Miyuki Kobelt  
Carol Kossler  
Kai and Petra Kottwitz  
Claudia Laux  
Cindy Lee and Bernd Wohler  
Lelouche Family  
Robert and Marion Lempka  
Dr. Haidong Li and Jiong Qu  
Dr. Constantin and Carrie Loebus  
Ingo Mandt and Kalliopi Minga  
Dr. Susan McEwen-Fial and Dieter Fial  
Dinèsha Mendis  
Gioia and Manuel Morasch  
Lionel Muñoz  
Don Nagle  
Fang Wang and Huai Zhi Niu  
Fumiko Okinaka  
Bruce and Miriana Olson  
Jill and Mike Pevovar  
Dianna and Devin Pratt  
Frank and Renate Riemensperger  
Jacqueline Karen Riley  
Regina Karin (Goetze) Roman  
Andrea Rosinger  
Marc and Michaela Roubert  
Dr. Geraldina Santandrea  
Katherine Sawyer and Stefan Walter  
Dr. Frederic Sax  
Richard and Heike Schäfer

Annette Schlosser  
Franz W. Schmadl  
Karl-Eberhard and Sylvia Schneider  
Laurent-Schuman Family  
Constantinos Siaflas  
Detlev Siebrecht  
Pete Sinclair  
Jeffrey Slovin and Lynn Lee  
Richard and Heidi Stalter  
Thomas Stürzel  
Vera Thiers  
Petra and Janfried Tirre  
Topf Family  
Trebel Family  
Thomas and Thordis Unger  
Dr. Klaus and Bianca Vajc  
Katherine and Edward Van Giezen  
Amanda and Joerg von Roden  
Christine Wagner  
Shawn and Seije Ward  
Karen Wilkinson  
Richard, Bonnie, and Hazel Winn  
Cheryl Zeigler  
Li Zhou and Xiaojun Tong  
Dimitri Zissimopoulos and Suzana Balogova

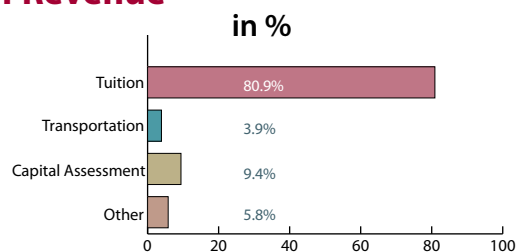
### Corporate Donors

Aramark  
ING-DiBa  
Kern AG  
Orange Hive

The figures in thousand euros in this Annual Report represent the school's financial status as of 30 June 2016, in

accordance with the audit conducted by BDO Deutsche Warentreuhand.

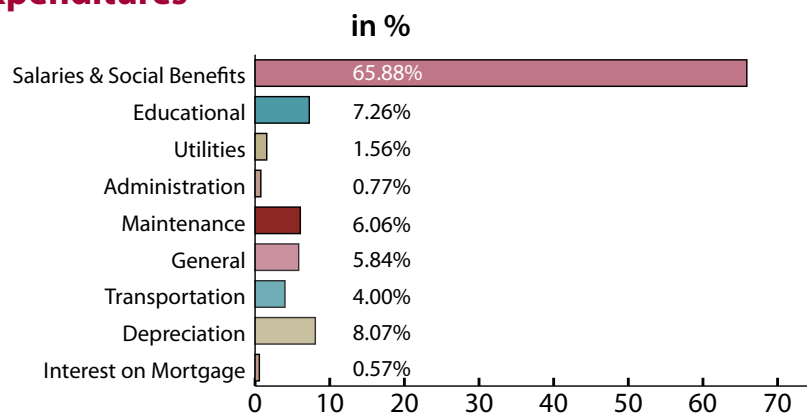
## Source of Revenue



**in T EUR**

Tuition	36.704
Transportation	1.767
Capital Assessment	4.264
Other	2.624
<b>Total</b>	<b>45.359</b>

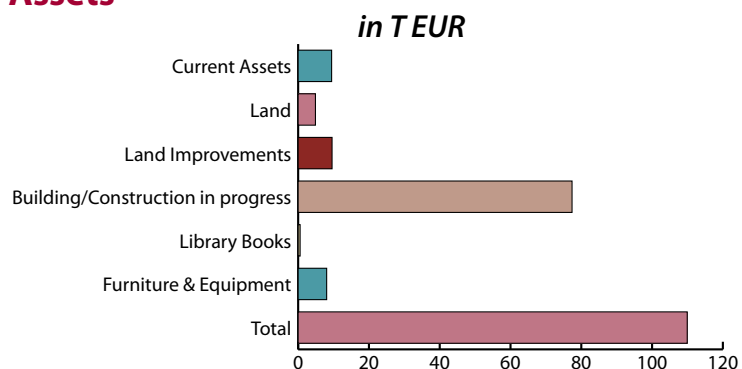
## Expenditures



**in T EUR**

Salaries & Soc. Benef.	30.789
Educational	3.394
Utilities	0.731
Administration	0.358
Maintenance	2.832
General	2.729
Transportation	1.871
Depreciation	3.772
Interest on Mortgage	0.267
<b>Total</b>	<b>46.752</b>

## Assets



**in T EUR**

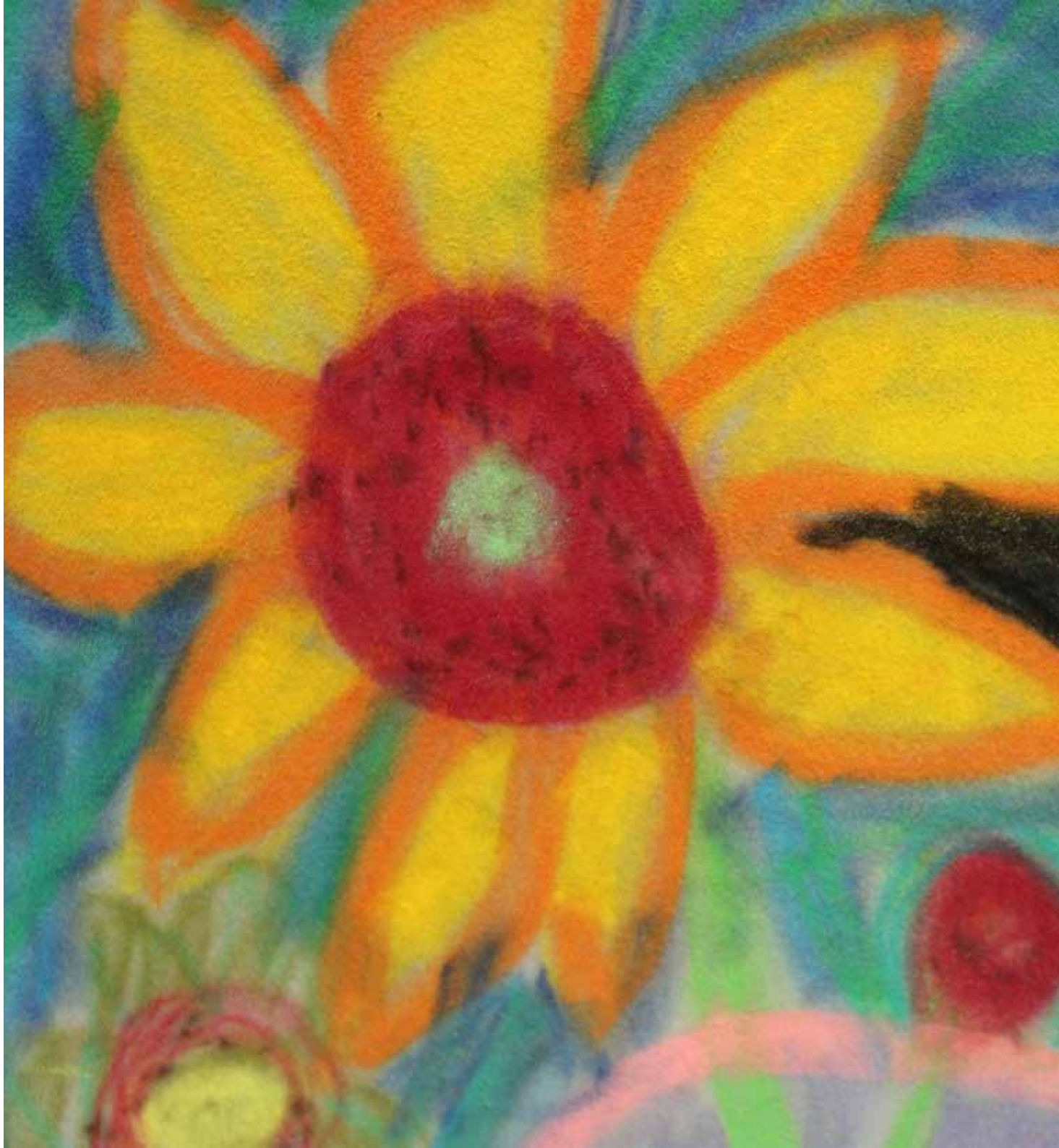
Current Assets	9.458
Land	4.884
Land Improvements	9.583
Building/Constr. in pr.	77.388
Library Books	0.558
Furniture & Equipmt.	8.058
<b>Total</b>	<b>109.929</b>

## Depreciation/Amortization

40.275



Primary School students explored the art of Vincent van Gogh. The artwork in this annual report was completed by Grade 1 students, who used soft pastels and tried to make the drawings as colorful as Vincent van Gogh's.



**Accreditation:**  
New England Association of Schools & Colleges

**Layout:** Beate (BT) Zimpel

**Frankfurt International School e.V.**  
An der Waldlust 15  
61440 Oberursel  
t: +49(0)6171 2024-0  
f: +49(0)6171 2024-384  
e: [admissions@fis.edu](mailto:admissions@fis.edu)

[www.fis.edu](http://www.fis.edu)